

# Instruction MANUAL

## Scout HD Trail Camera

(Any contents related to 3G/MMS are for Scout HD only.)

Pls scan QR codes below to  
download APP



iphone

Android



# Contents

<b>1. Quick Start</b> .....	<b>- 1 -</b>
1.1 What in the Box? .....	- 1 -
1.2 How to Get the Camera Ready?.....	- 1 -
1.3 How to Setup the Camera?.....	- 2 -
1.3 Camera Default Settings in Red Letter .....	<b>Error! Bookmark not defined.</b>
<b>2. Whole View and Details of Camera</b> .....	<b>- 4 -</b>
2.1 Figure 1: Front View of Camera; .....	- 4 -
2.2 Figure 2: Bottom View of Camera;.....	- 5 -
2.3 Figure 3: Internal, Side and Back View of Camera.....	- 5 -
<b>3. Introduction</b> .....	<b>- 6 -</b>
3.1 Fully Functionality Introduction .....	- 6 -
3.2 Power Supply .....	- 6 -
3.3 SD Card Selection.....	- 7 -
3.5 USB Connection .....	- 7 -
3.6 Attention.....	- 8 -
3.7 Key Features .....	- 8 -
<b>4. Operation List</b> .....	<b>- 9 -</b>
4.1 Video/Photo Playback .....	- 9 -
4.2 Delete .....	- 9 -
4.3 Format of SD Card.....	- 9 -
4.4 Auto Power Off.....	- 9 -
4.5 Operation Menu .....	- 9 -
<b>5. Specification</b> .....	<b>- 13 -</b>
<b>6. Trouble Shooting</b> .....	<b>- 14 -</b>
6.1 Photos Do Not Capture Subject of Interest .....	- 14 -
6.2 Camera Stops Taking Images or Won't Take Images.....	- 14 -
6.3 Night Vision Flash Range Doesn't Meet Expectation.....	- 15 -
6.4 Photos Do Not Capture Subject of Interest .....	- 15 -
<b>7. Warranty</b> .....	<b>- 15 -</b>

# 1. Quick Start

## 1.1 What's in the Box?



- Trail camera x 1
- USB cable x1
- Mounting strap x1
- Antenna x1

## 1.2 Hardware Preparation

### 1. Insert the batteries

Open camera house and insert the batteries as electrodes marked in battery case.

Note: 12AA Alkaline or Lithium are recommended. Lithium batteries may make battery display on picture not read correctly.



### 2. Insert the SD card

8-32GB SD card is recommended. Please insert as marked. Ensure SD card is not locked.



### 3. Mount the Antenna & Insert SIM card



## 1.3 How to Setup the Camera?

### 1. Power on the Camera

Switch to **ON**; camera is ready to work upon motion triggers (screen will not light up upon “ON”). Camera is ready after this if default settings are preferred. Please refer to page 3 below for default settings in red letters.

### 2. Configure Camera Settings

Switch to **SETUP**, screen will light up. Press **MENU** button, you will enter the menu to view & change settings. Please press arrow keys for navigation and **OK** key to confirm settings.

### 3. How to Connect the Camera to Network

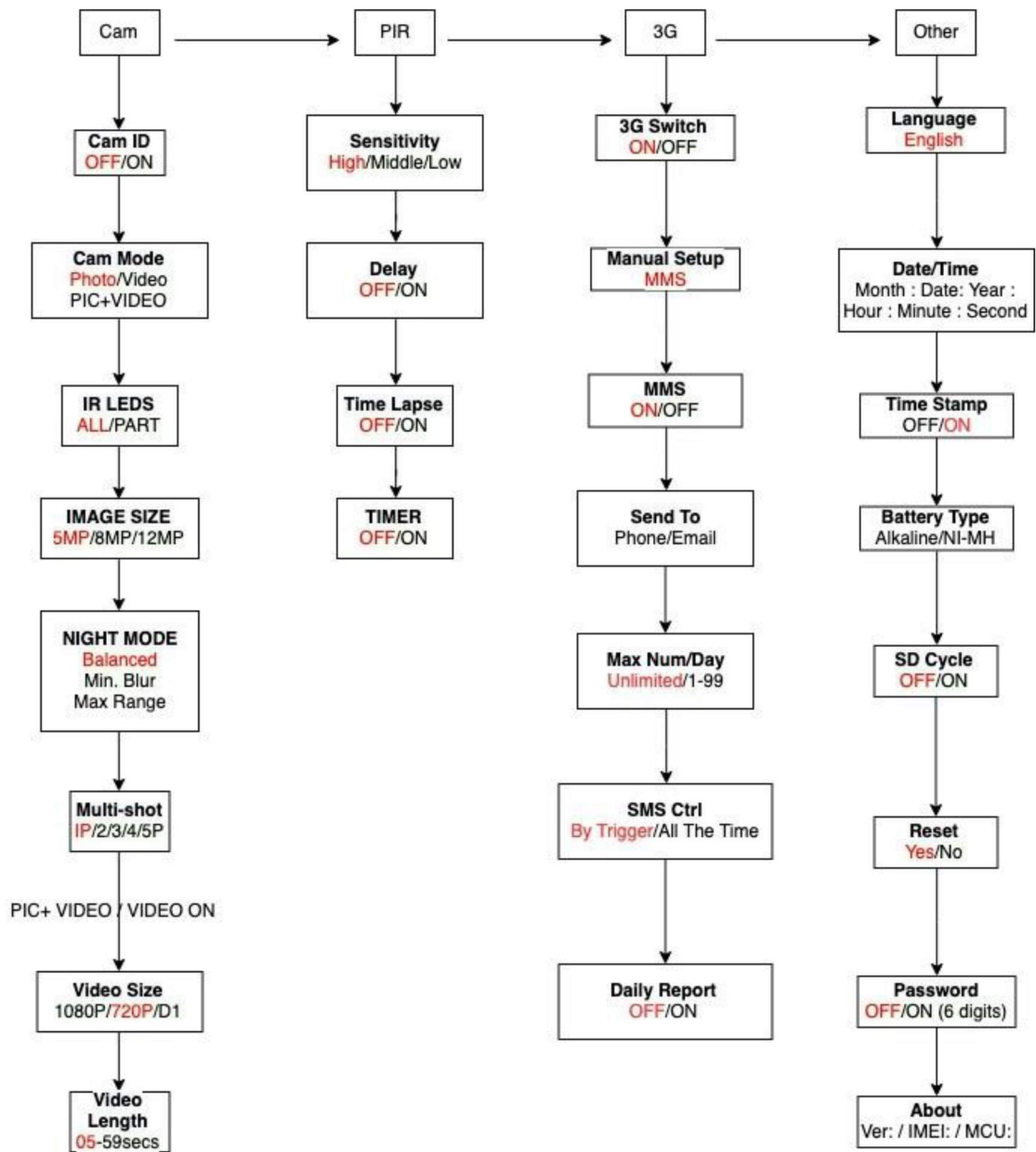
Different from none cellular models, the Scout HD model has a signal “Searching” process when you switch the power key to **SETUP**.

If Bell sim provided by Reconeco Outdoors is used no manual setup is needed. Send picture of sim card and IMEI of camera to [sales@reconecooutdoors.com](mailto:sales@reconecooutdoors.com). Once activated fill in phone number/emails in “Send to”, switch camera to on and you will be able to receive photos upon motion triggers.

If using you own sim card activate it with cell phone provider, fill in MMSC, APN, Proxy and Port (you may need to enter username and password) details in “Manual Setup”. The camera will connect to their network to send photos upon motion trigger.

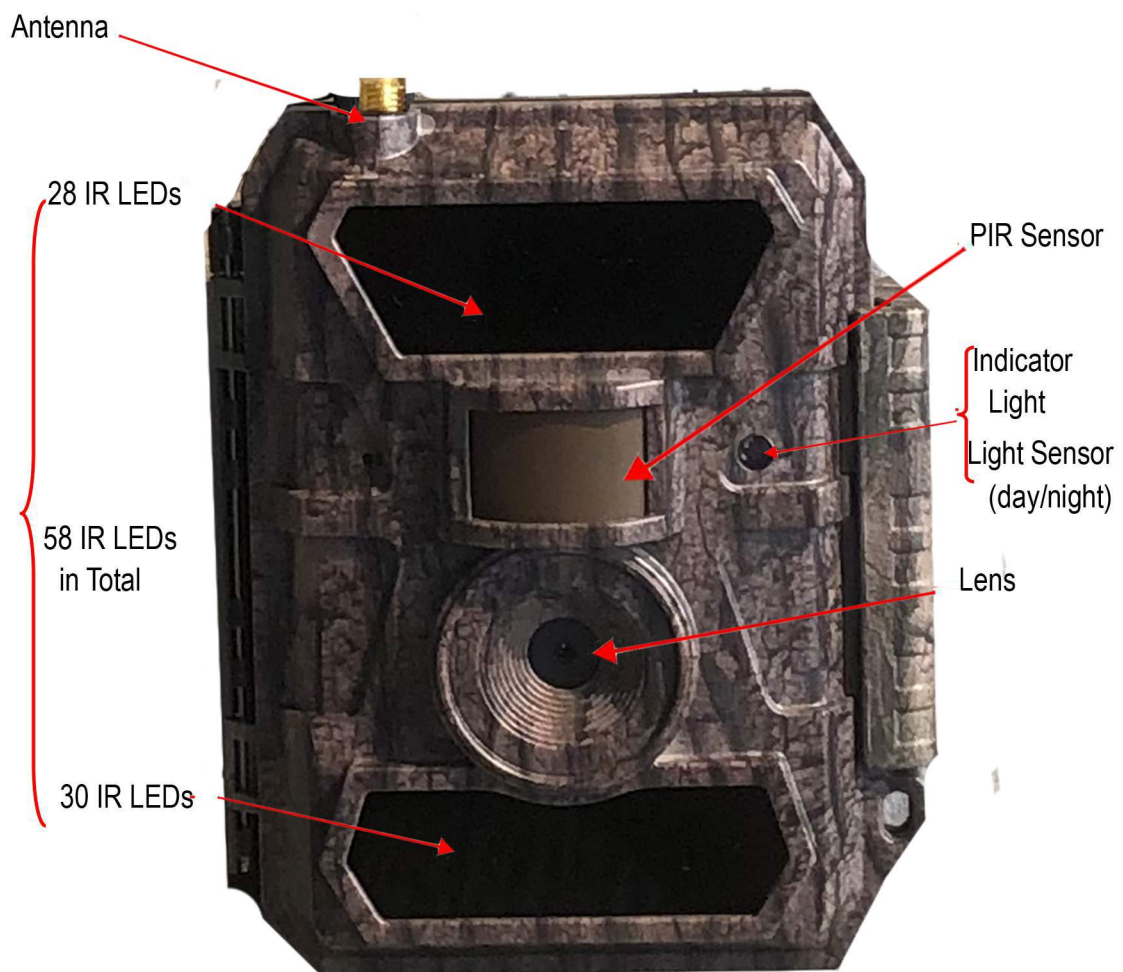
Note: This camera can send photos to 2 phones & 2 emails. It's set to send photos to devices via MMS.

Note: Bell APN is auto populated in manual setup. After sim card activation add text number and/or email addresses.



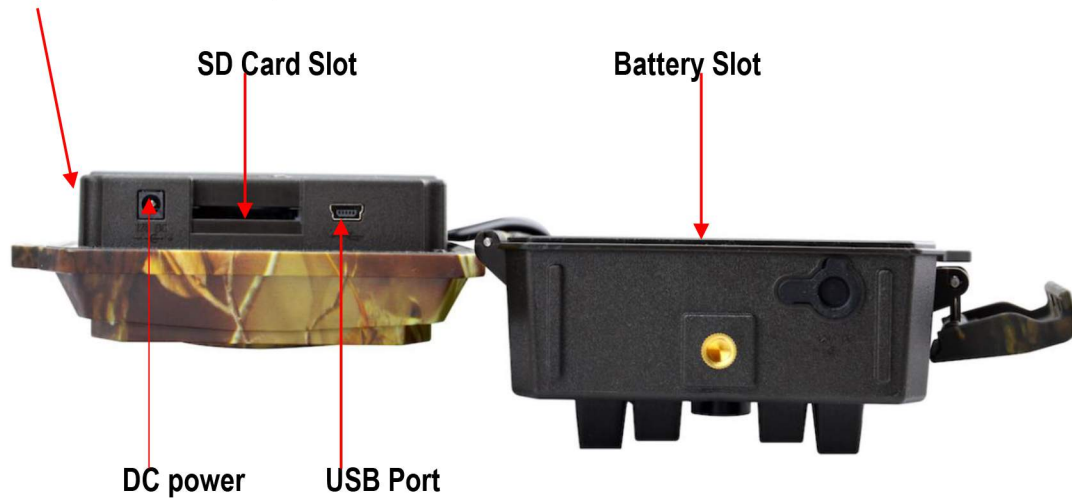
## 2. Camera Overview

2.1 Figure 1: Front View of Camera;

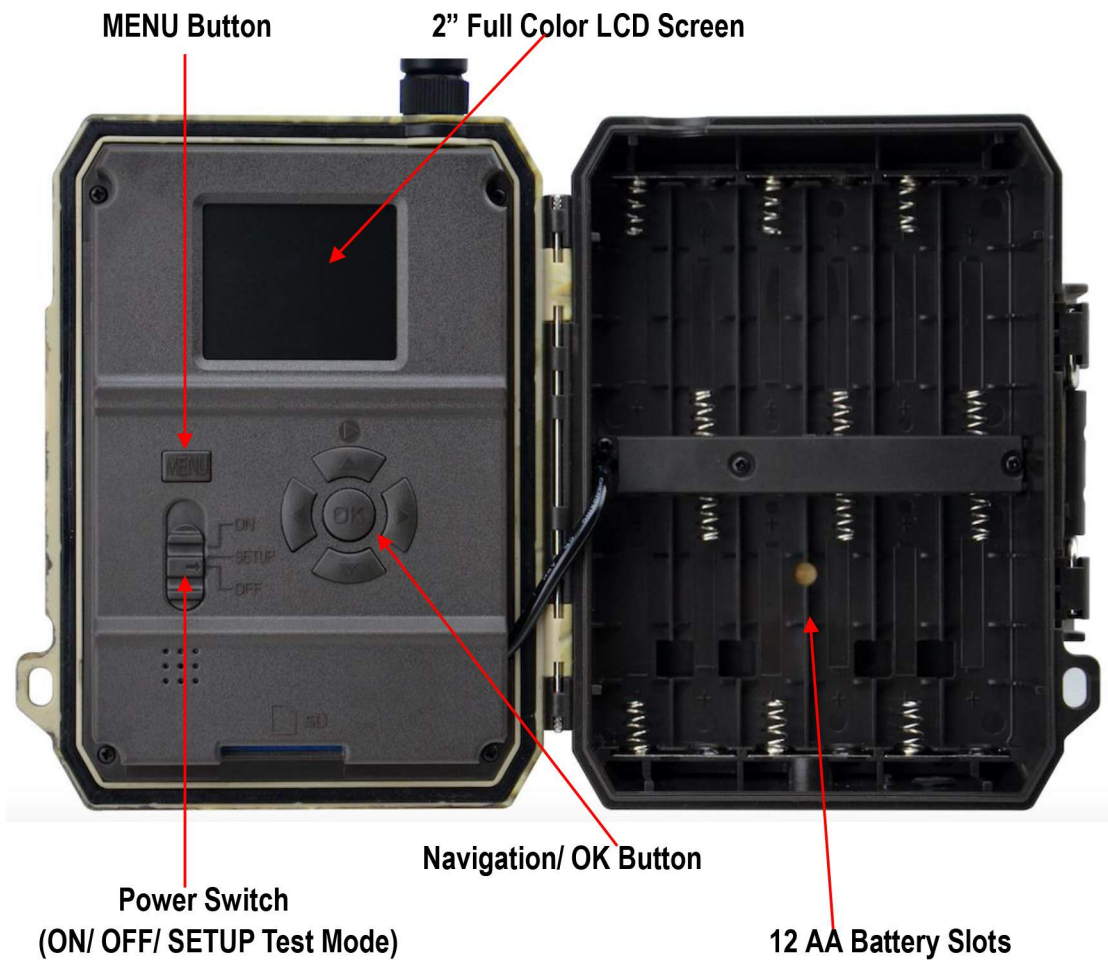


## 2.2 Figure 2: Bottom View;

SIM CARD Golden Chip Faces Down Towards Front Of Camera.



## 2.3 Figure 3: Internal, Side and Back View of Camera



### 3. Introduction

Reconeco Outdoors is proud to provide you with the SCOUT HD MMS cellular camera. We want to thank you for choosing one of our easy operation highly quality products. We always welcome feedback and input to make our products better.

#### 3.1 Fully Functionality Introduction

The Scout HD is aimed to offer you stable high quality hardware and cutting edge technology. Our products advanced features like daily reporting, remote ctrl APP (IOS & Android), 15 meters (65 ft) invisible real night vision ability, 0.35 seconds trigger time and up to 5 photos per trigger multi-shot can capture the entire movement of an animal or intruder.

#### 3.2 Power Supply

##### A. Batteries

Camera runs on 6 or 12 AA alkaline, lithium or NiMH rechargeable batteries. Please choose battery type you're using in the menu option "Battery Type" to reach longer operation time. If using lithium batteries please select alkaline.

Ensure batteries are inserted with correct polarity as marked on the housing. Improper installation may cause malfunction or damage to the camera.

**Note: Using different types of batteries may cause permanent damage to camera which voids warranty policy!**

Due to different settings, movement within camera detection zone, quality of batteries, and environment, we're not able to list out exact number of photos and videos that camera can achieve. Table below shows approximate number of photos or videos camera can take with 12AA alkaline batteries. Better performance can be achieved by 12 AA lithium or rechargeable NiMH batteries.

Test Condition: LCD screen off. Mode: "Power On" _PIR intelligent automatically monitoring.					
12AA Alkaline Batteries					
Photos shot per day		Working time	Video clips shot per day		Working time
IR LEDs On					
Max.Range	100 pics	81 days	10secs video clips	10 clips	75 days
Balanced	100 pics	76 days			
Min. Blur	100 pics	70 days			
IR LEDs Off					
Photo	100 pics	113 days	10secs video clips	10 clips	228 days



## B. Solar Panel

To extend AA battery life our camera is compatible with most standard 12V/2A lithium battery powered solar panels. Solar panel option does not recharge any of the AA batteries. It simply uses the charge of the embedded lithium battery in the solar panel until it runs out. It then will automatically switch using the AA batteries in the camera. Once enough charge is restored to the lithium battery from the solar panel it switches back using the lithium battery.

## C. Power Adaptor—Security Surveillance Purpose

This camera can also be powered by an external 9-12V/ 2A DC adapter. We recommend removing the AA batteries when power adapter is used.

## 3.3 SD Card Selection

Using a memory card is required to operate the camera. When the camera is "ON" and no memory card is used, the screen displays "No card". The SD slot of the camera has a 32 GB memory capacity. Before inserting or removing the memory card, the camera must be turned "OFF". Failing to do so may cause loss of or damage the pictures/ videos already recorded from the memory card. When the SD card is full, the viewing screen shows "Memory Full". The following data shows an approximate quantity of photos which can be recorded by the camera depending on the memory card capacity.

Chart below will show you the approximate capacity of different size SD cards.

<b>SD Size Capacity</b>	<b>1GB</b>	<b>2 GB</b>	<b>4 GB</b>	<b>8 GB</b>	<b>16 GB</b>	<b>32 GB</b>
<b>Photo (pictures)</b>						
<b>5MP</b>	869	1631	3585	7492	15307	30936
<b>8 MP</b>	556	1041	2294	4798	9794	19795
<b>12 MP</b>	391	733	1613	3371	6887	13919
<b>Video (hours)</b>						
<b>640x480</b>	00:05:27	00:10:13	00:22:28	00:46:57	01:35:56	03:13:52
<b>HD</b>	00:03:56	00:07:23	00:16:13	00:33:53	01:09:14	02:19:56
<b>FHD</b>	00:02:04	00:03:53	00:08:31	00:17:48	00:36:20	01:13:21

## 3.5 USB Connection

When camera is connected via USB cable; screen display "MSDC", press "Menu" once, "MSDC" turns to "PC Cam", camera now can be used as a PC camera; press "Menu" again, camera exits PC camera mode.

### **3.6 Attention**

1. Insert the SD memory card correctly powering off to insert or remove the card.
2. Please use high-quality AA batteries in order to prevent battery cells from corrosion or leaking acid.
3. Use the proper adaptor (12V/2A) of this camera to supply power, and ensure proper installation of batteries.
4. In Test mode, camera will automatically go to sleep mode in 3 mins if there is no keypad touching.
5. Do not interrupt power during firmware upgrade. Please deliver it back to factory if the device doesn't work after upgrading.
6. Do not insert or pull out SD card and battery or plug in and out the adaptor when the camera is on.
7. Try to avoid having any objects such as leaves, strings, or ribbons in the motion detection zone of cameras, to avoid mistaking photographs or videos.
8. Do not keep camera next to hot irrelevant objects, air conditioner exhaust vents, and light, etc. to avoid mistaking photos or videos.
9. Programmed Date/Time can be saved in camera for 12 hours as long as camera was powered for 1 hour before.

### **3.7 Key Features**

1. 0.35 second trigger speed
2. 55 degree PIR and Field of view.
3. 12MP/ 1080P@30FPS.
4. Programmable 5/8/12 Megapixel high-quality resolution.
5. 58pcs invisible IR LEDs, offer 20 meters (65 feet) real night vision distance;
6. Support multiple functions: adjustable PIR sensitivity, Multi-shot (1~5 photos per trigger), programmable delay between motions, Time Lapse, Timer, stamp of (camera ID, date/time, temperature, moon phase) on every single photo;
7. Available operation temperature: -30°C to 60°C;
8. Built-in 2.0" full color LCD screen;
11. With MMS function, camera can transmit photos to 1-2 preset mobile phones and 1-2 email per trigger.
12. SMS remote configurations via app
13. SMS trigger camera/ get picture option.
14. APP available in IOS & Android APP store.

## 4. Operation List

### 4.1 Video/Photo Playback

Turn "Power Switch" to SETUP position to enter test mode, press arrow button "↑" to enter Playback; press "←" and "→" for selection, "OK" to play photo/video.

- 1) Press button "↑" again to exit.
- 2) In Playback Mode, press "Menu" button to delete files, or format SD card; press "Menu" again to exit.

### 4.2 Delete

a. Delete one: delete selected photo/video;

Press "OK" to choose, press "↑" and "↓" for selection, "Yes" to confirm, "No" to exit back to previous page.

b. Delete All.

### 4.3 Format of SD Card

a. No

b. Yes: to format SD card via camera.

Press "←" and "→" for selection, "Yes" to confirm, "No" to exit to previous page.

### 4.4 Auto Power Off

In Test mode, camera will automatically power off in 3 mins if there is no keypad touching. Please manually turn it OFF and back to SETUP to wake up the camera for further configuration.

**Note:** camera stays in "Test" mode if camera is in Menu configuration pages.

### 4.5 Operation Menu

Test mode, Press "Menu" once to enter camera setting menu; to navigate settings interface by pressing "←", "↑", "→", or "↓", press "OK" for selection, "Menu" to exit to previous page, and "Menu" to switch alpha/ digits/ symbols.

Note: For some settings, user needs to press "Menu" to save & exit the configuration after pressing "OK" to confirm; (Cam ID, Deley, Time Lapse, Timer, Password)

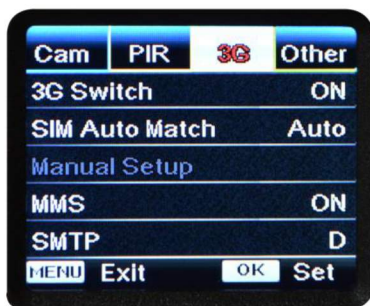


Cam	
Settings	Programmable Options
Cam ID	Select "ON", press "OK", to set 4 digits/ alphabets for each camera. Such function can help user to identify photos are from where and which camera.
Cam Mode	Photo, PIC+VIDEO, Video 1) <b>Photo</b> : camera shoots photos only based on configured Multi-shot & Image Size; 2) <b>"PIC+VIDEO"</b> , camera shoots photo(s) first, then video upon same trigger event based on Video Length/Size and Multi-shot/ Image Size user configured; 3) <b>Video</b> : camera shoots videos only based on configured Video Length/Size;
IR LEDs	<b>All/Part</b> <b>All</b> : all 58pcs IR Black LEDs will work in dark environment; <b>Part</b> : Bottom 30pcs IR Black LEDs will be turned off.
Image Size	5MP (2560*1920), 8MP (3264*2448), 12MP (4032*3024)
Night Mode	1) <b>Min. Blur</b> : Short exposure time to minimize motion blur for better image quality; shortened IR flash range; 2) <b>Max. Range</b> : Longer exposure time to extend IR flash range for better night vision; lower image quality; 3) <b>Balanced</b> : combination of above 2 options;
Multi-shot	Programmable 1~5 photos per trigger
Video On	
Video Size	1280*720, 640*480, 1920*1080,
Video length	05~59 Secs



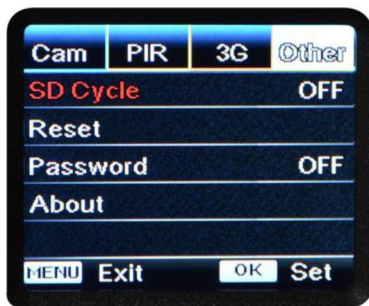
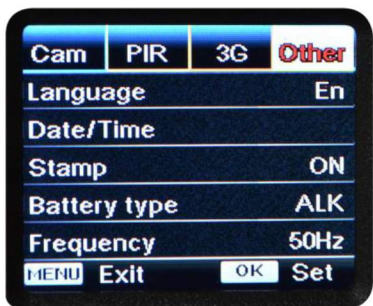
PIR	
Settings	Programmable Options
Sensitivity	High, Middle, Low

	Higher sensitivity is 1) more sensitive to movements by smaller subjects; 2) longer detection distance; 3) easier for sensor to detect difference between body heat and outdoor temperature; 4) easier to trigger camera to record. In high temperature environment, body heat of subjects and environment temperature is hard to tell by camera, suggest setting <b>High</b> .
Delay	Select "ON", press "OK", to set a time interval that you desire between photos/videos upon motion. This option avoid camera taking too many photos or videos. <b>Example:</b> Camera will wait 1 minute between photo/video recordings with motion if pre-set time interval is 00:01:00 <b>Configurable delay time:</b> 00:00:05~23:59:59. <b>Note:</b> <u>Pls don't turn ON Time Lapse and Delay simultaneously!</u>
Time Lapse	Select "ON", press "OK", to set the interval; <b>PIR sensor of camera will be turned off</b> ; camera will shoot pics or video clips automatically upon the interval user set. <b>Configurable interval:</b> 00:00:05~23:59:59. <b>Note:</b> <u>Pls don't turn ON Time Lapse and Delay simultaneously!</u>
Timer	Select "ON", press "OK", to set the beginning time and end time (hour/minute); camera will only work during the time period user has set. i.e.: 15:00 – 18:00; camera only works during 15:00 – 18:00



<b>Manual Setup</b>	
<b>MMS Setup</b>	
MMS Setup	Pls contact your operator for <b>URL/ APN/ IP/ Port (Username &amp; Password if required)</b> and enter these info manually. <b>Note:</b> 1. With MMS setups added, camera can send photos to preset phones/ email. If MMS is with wrong information entered, then phones/ email accounts will not be able to receive photos from camera.
<b>Send To</b>	
Phone: Enter recipients' phone numbers (1~2) (ten digits including area code)	
Email: Enter recipients' email accounts(1~2)	
<b>SIM PIN</b>	
You can ignore description below if your SIM has been activated already.	

<b>(Phase “Please input PIN-Code” will not pop up after signal search if your SIM is activated.)</b>	
<b>SMTP/ FTP Pic Size</b>	Enter recipients' email accounts(1~2)
Pictures sent via SMTP and FTP are in optional size as 640*480, or 1920*1440	Enter recipients' email accounts(1~2)
<b>Note:</b>	
1) camera will only send photos to preset phone numbers via MMS;	
1) <b>Max Num/Day</b>	
Default: unlimited. Optional: 1~99 Ex. User chooses 50, then cameras will only send 50 pics every day. All the rest of the photos will only be stored in SD card.	
<b>SMS Ctrl</b>	
1) By Trigger: <b>(Suggest for AA battery power)</b> Camera will only be able to change & save setups remotely when camera is triggered to shoot photos/ videos.	
2) All the Time: <b>(Suggest using when Power adapter connected as this option will consume huge battery power.)</b>	
Cameras GPRS module on stand-by all the time; so camera setups can be changed and saved whenever you sent the remote SMS setup commands.	
<b>Daily Report</b>	
1) OFF;	
2) ON; Choose ON to enter to set up a time when you want camera to send you the Daily Report;	
2) <b>Contents contain in Daily Report:</b> Device IMEI Number, CSQ (Signal Strength): 0~31, Camera ID, Temperature, Date & Time, Battery Left Volume, SD Card Info, Total Pics Taken by Cam, Pics Sent by Cam.	



<b>Other</b>	
--------------	--

Language	<b>English...</b>
Date/Time	Month : date : year; hour : minute : second <b>Note: Pls adjust camera date/time to ensure some functions work as expected.</b>
Stamp	Imprints of programmed camera ID, moon phase, temperature, date, and time on photo
Battery Type	Alkaline/ Lithium/ NI-MH rechargeable Choose correct battery type of using batteries in camera makes camera perform better.
SD Cycle	Select "ON", press "OK", camera will continue to record photos/videos by deleting earliest photos or video clips.
Reset	Select "Yes" to reset camera back to factory default settings.
Password	Select "ON", press "OK", to enable password protection for your camera; support totally 6 digits/ alphabets long password access.
About	Firmware version in camera (Version: / IMEI: / MCU:)

## 5. Specification

Image Sensor	5 Mega Pixels Color CMOS
Effective Pixels	2560x1920
Day/Night Mode	Yes
IR range	20m
IR Setting	Top: 28 LED, Foot: 30 LED
Memory	SD Card (4GB – 32GB)
Operating keys	7
Lens	FOV=55°; Auto IR-Cut-Remove (at night)
LCD Screen	2" Full Color LCD
PIR distance	20m (65feet)
PIR Angle	55 degree
Picture size	5MP/8MP/12MP = 2560x1920/3264x2448/4032x3024
Picture Format	JPEG
Video resolution	FHD (1920x1080), HD (1280x720), VGA(640x480)
Video Format	AVI
Video Length	05-59sec. programmable
Shooting Numbers	1-5
Trigger Speed	0.35s
Camera + Video	Yes
Device Serial No. (IMEI)	Yes
Time Lapse	Yes

SD Card cycle	ON/OFF
Operation Power	Battery: 9V; DC: 12V
Battery Type	12AA
External DC	12V
Stand-by Current	0.135mA
Stand-by Time	8 months (12×AA)
Auto Power Off	In Test mode, camera will automatically power off in 3 mins if there is no keypad touching.
Interface	USB/SD Card/DC Port
Mounting	Strap; Tripod
Operating Temperature	-30°C to 60°C
Storage temperature	-30°C to 70°C
Operation Humidity	5%-90%
Waterproof spec	IP66
Dimensions	148.25*117.37*78.25 mm
Weight	367 g
Certification	CE FCC RoHs

Specifications are subject to change without prior notice.

## 6. Trouble Shooting

### 6.1 Photos Do Not Capture Subject of Interest

1. Check the “Sensor Level” (PIR sensitivity) parameter setting. For warm environmental conditions, set the Sensor Level to “High” and for cold weather use, set the sensor for “Low”.
2. Try to set your camera up in an area where no heat resources are in the camera’s field of view.
3. In some cases, set the camera near water will make the camera take images with no subject in them. Try to aim the camera over ground.
4. Try to set camera on stable and immovable objects, i.e.: large trees.
5. At night, motion detector may detect beyond range of the IR illumination. Reduce distance setting by adjusting sensor sensitivity.
6. Rising sun or sunset can trigger sensor. Camera must be reoriented.
7. If person/animal moves quickly, it may move out of the camera’s field of view before photo is taken. Move camera further back or redirect camera.

### 6.2 Camera Stops or Won’t Take Pictures

1. Please make sure that the SD card is not full. If the card is full, camera will stop taking images. Or user can turn on Cycle Recording to avoid such problem.
2. Check batteries to make sure that alkaline, lithium or NiMH AA batteries have enough power for camera to work.
3. Make sure that the camera power switch is in the “On” position.
4. Please format the SD card with camera before using or when camera stops taking images.



### **6.3 Night Vision Flash Is Weak**

1. Please check to make sure that batteries are fully charged or enough power is left.
2. "Max Range" offers better IR flash range. Given IR flash range values are based on Max Range setting; so please adjust Night Mode to Max Range for better night vision flash range;
3. High-quality 1.5V NiMH rechargeable AA batteries may offer much better IR flash range; alkaline batteries cannot deliver enough amperage to power the illuminator consistently at night;
4. To ensure accuracy and quality of night time image, please mount camera to dark environment without any obvious light sources;
5. Certain surroundings (like trees, walls, ground, etc.) within flash range can get you better night time images; please do not aim camera to total open field where there is nothing within IR flash range to reflect flash back; it's like shinning a flashlight into sky in night, you just can't see anything; same does camera;

### **6.4 Photos Do Not Capture Subject of Interest**

1. Check the "Sensor Level" (PIR sensitivity) parameter setting. For warm environmental conditions, set the Sensor Level to "High" and for cold weather use, set the sensor for "Low".
2. Try to set your camera up in an area where there is not a heat source in the camera's line of sight.
3. In some cases, set the camera near water will make the camera take images with no subject in them. Try aiming the camera over ground.
4. Try to avoid setting the camera up on small trees that are prone to being moved by strong winds.
5. Remove any limbs which are right in front of the camera lens.

## **7. Warranty**

Reconeco Outdoors has full confidence in our products and is pleased to offer you the following as specified in the warranty terms and services below. Based on a strict QC program we offer all our customers a one year limited warranty.

Our products are warranted against defects in materials and workmanship for a period of one year from the date of original purchase. If a defect exists, we will, at our option and to extent permitted by law (1) repair the product at no charge using new or refurbished parts; (2) exchange the product with a functionally equivalent product that is new or refurbished provided that the product is returned freight charge prepaid.

This warranty excludes damage resulting from abuse, accident, modifications or other causes that are not defects in materials and workmanship, or by someone other than our authorized technicians. This warranty only covers failures due to defects in materials or workmanship under normal usage. To obtain warranty service, please contact us to determine the nature of

problem before returning the product under this warranty (with a written description of the problem and print samples) for repair or exchange.